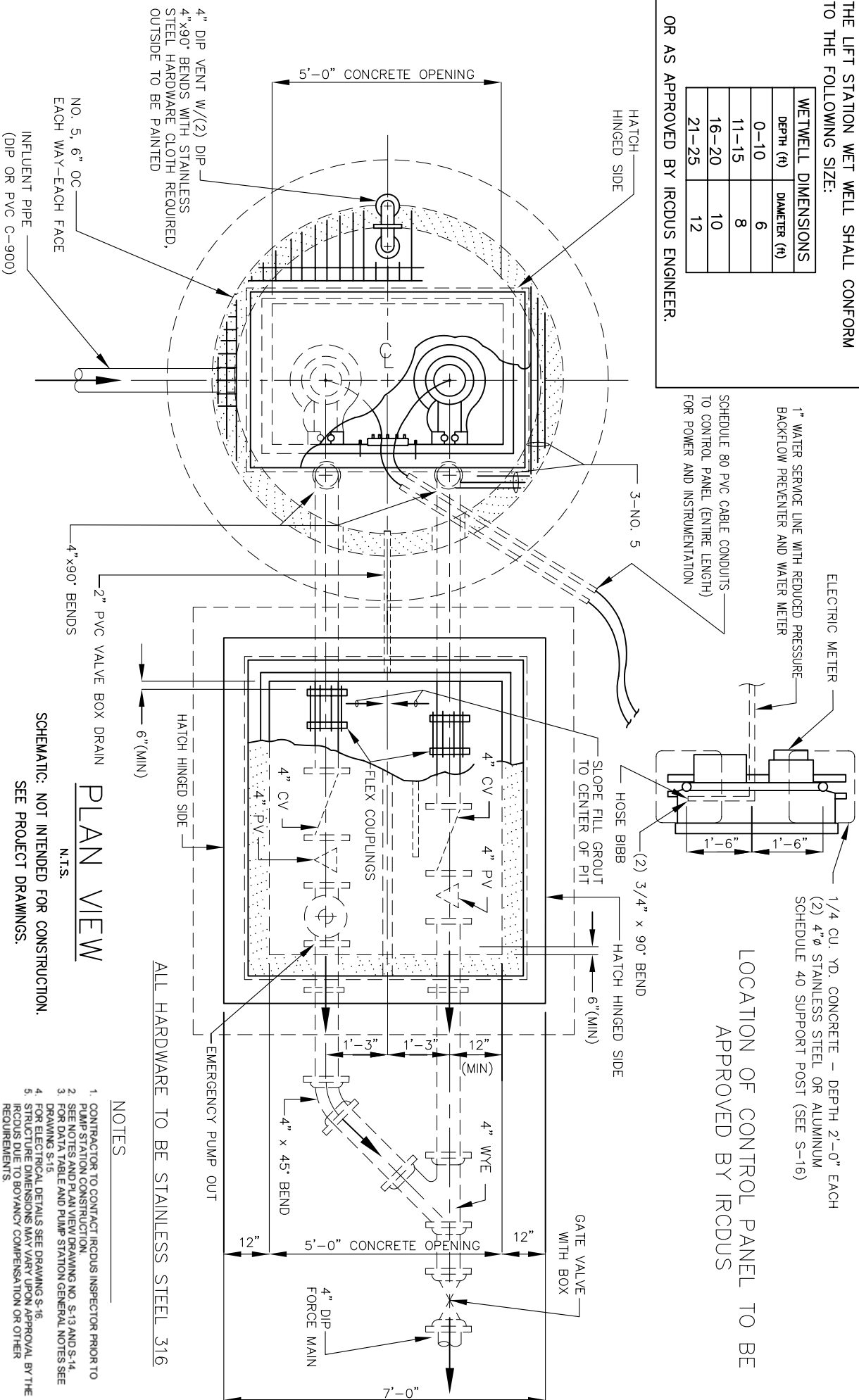


THE LIFT STATION WET WELL SHALL CONFORM TO THE FOLLOWING SIZE:

WETWELL DIMENSIONS	
DEPTH (ft)	DIAMETER (ft)
0-10	6
11-15	8
16-20	10
21-25	12

OR AS APPROVED BY IRCUDS ENGINEER.



1/4 CU. YD. CONCRETE - DEPTH 2'-0" EACH
 (2) 4" Ø STAINLESS STEEL OR ALUMINUM
 SCHEDULE 40 SUPPORT POST (SEE S-16)
 LOCATION OF CONTROL PANEL TO BE
 APPROVED BY IRCUDS

PLAN VIEW
 N.T.S.

SCHEMATIC: NOT INTENDED FOR CONSTRUCTION.
 SEE PROJECT DRAWINGS.

**TYPICAL PUMPING STATION
 (PLAN)**

NOTES

1. CONTRACTOR TO CONTACT IRCUDS INSPECTOR PRIOR TO PUMP STATION CONSTRUCTION.
2. SEE NOTES AND PLAN VIEW DRAWING NO. S-13 AND S-14.
3. FOR DATA TABLE AND PUMP STATION GENERAL NOTES SEE DRAWING S-15.
4. FOR ELECTRICAL DETAILS SEE DRAWING S-16.
5. STRUCTURE DIMENSIONS MAY VARY UPON APPROVAL BY THE IRCUDS DUE TO BOYANCY COMPENSATION OR OTHER REQUIREMENTS.
6. GATE VALVE TO BE LOCATED AT FORCE MAIN JUNCTION.
7. STAINLESS STEEL LIFTING BAIS SHALL BE USED.
8. GRINDER PUMPS SHALL BE A MAXIMUM OF 5.0 HORSE POWER UNLESS OTHERWISE APPROVED BY IRCUDS.
9. ELECTRICAL CONTROL PANEL SHALL CONFORM TO PUMP MANUFACTURERS' & SCADA SYSTEM REQUIREMENTS.
10. SAFETY NET WITH STAINLESS STEEL HARDWARE SHALL COVER WETWELLS.
11. LINER FOR ALL WETWELLS SHALL BE HDPE OR FIBERGLASS.
12. FOR WETWELLS GREATER THAN 12 IN DIAMETER, TOTAL DEPTH CANNOT EXCEED 20'. BE LOCATED IN A DEDICATED EASEMENT 300' MINIMUM STRIKE FROM HOMES, CUL DE SAC & AVIARY FROM SURFACE BODY WATER.
13. 200' MINIMUM STRIKE FROM HOMES, CUL DE SAC & AVIARY FROM SURFACE BODY WATER.

ALL HARDWARE TO BE STAINLESS STEEL 316

DRAWING NO. S-13

INDIAN RIVER COUNTY
 DEPARTMENT OF
 UTILITIES SERVICES



JULY 2009