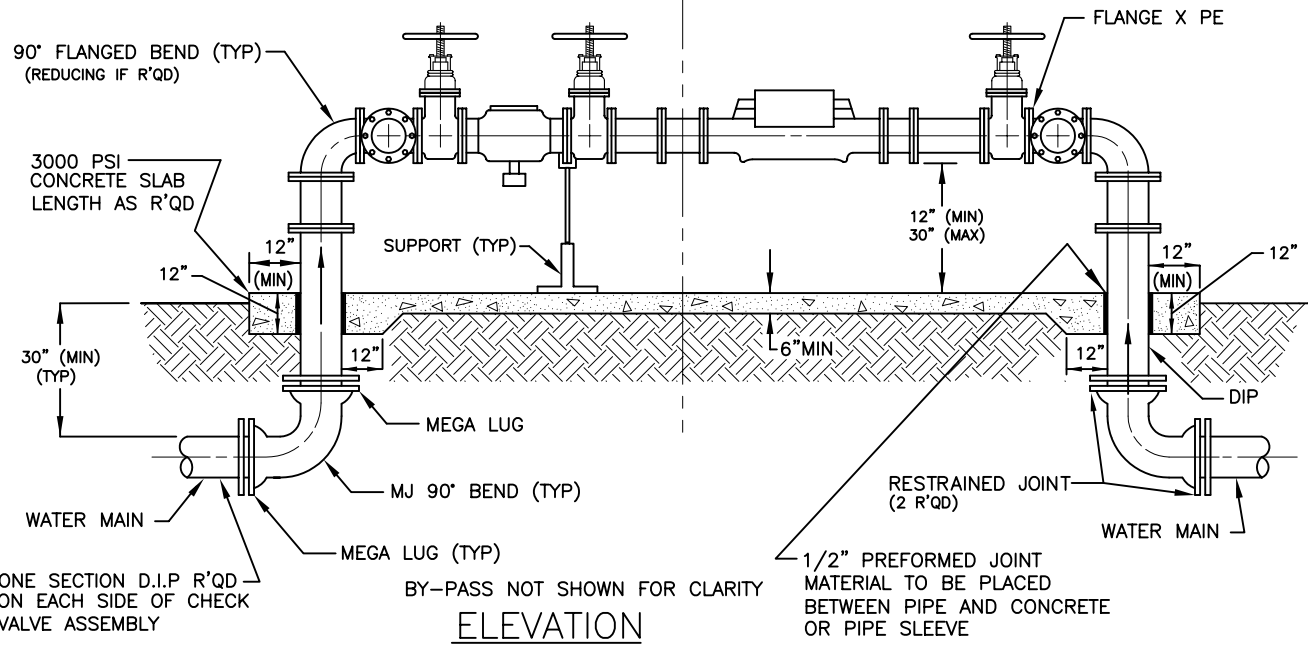


PLAN VIEW

← CUSTOMER RESPONSIBILITY | IRCDUS RESPONSIBILITY →



ELEVATION

NOTES

1. ALL ABOVE GROUND PIPING SHALL BE FLANGED DUCTILE IRON.
2. FIELD FABRICATED FLANGES ARE UNACCEPTABLE.
3. DEVICE TO BE INSTALLED IN STRICT ACCORDANCE WITH MANUFACTURERS INSTRUCTIONS.
4. ASSEMBLY TO BE PRIMED WITH RUST INHIBITIVE PRIMER AND FINISHED PAINTED AFTER INSTALLATION. (SEE APPROVED MANUFACTURERS' PRODUCT LIST)
5. BY-PASS PIPE DIAMETER SHALL BE SAME SIZE AS MAIN PIPE.

INDIAN RIVER COUNTY
DEPARTMENT OF
UTILITIES SERVICES



MASTER METER
COMBINATION ASSEMBLY

DRAWING
NO.
W-10